

Restore confidence in one appointment

Opalustre® Microabrasion Slurry

Opalustre slurry is a 6.6% hydrochloric acid slurry that contains silicon carbide microparticles. This helps remove unsightly enamel decalcification defects that are less than 0.2 mm in depth. It is ideal for superficial white and brown demineralisation due to enamel mottling from fluorosis.¹

- Permanently removes superficial white and brown stains
- Provides minimally invasive treatment for mild fluorosis
- Comes in a direct, mess-free delivery
- Features optimum viscosity for precise abrasion and control of the slurry
- Active treatment keeps clinician in direct control of stain removal





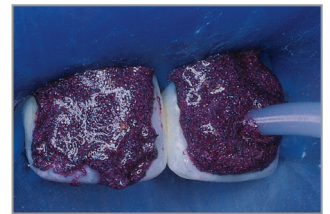
554

Opalustre Kit

- 4 x 1.2 ml Opalustre syringes
- 20 x OpalCups - 10 bristle and 10 finishing
- 20 x White Mac tips



Before.



After rubber dam placement, apply Opalustre slurry to discoloured enamel using the syringe.



Use bristle cup to compress Opalustre slurry on tooth surface. Intermittent rinsing and inspection is recommended. Finish treatment by polishing with OpalCups finishing.



After enamel microabrasion and 21 days of whitening with Opalescence® PF whitening.

'Having had tried most reported techniques for microabrasion in the past with varying levels of success, nothing has consistently given me the predictable results Opalustre has. Easy to apply and use, the purple colour provides an excellent contrast to the surrounding tissue, allowing for precise placement. In practice providing predominantly aesthetic dentistry, nothing gives me greater satisfaction than implementing minimally invasive techniques such as Opalustre microabrasion and is something all clinicians should have in their arsenal.'

Dr. Bharat Agrawal



Call us: 0800 808 855 orders@henryschein.co.nz www.henryschein.co.nz
 © 2021 Ultradent Products, Inc. All Rights Reserved.



Ultradent ANZ



@ultradentanz